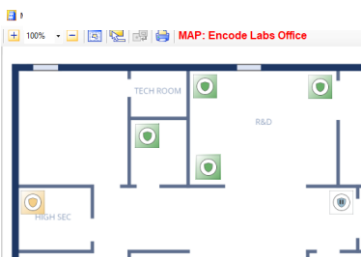
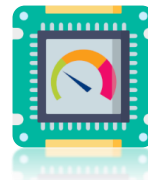


Encode Labs PRTG Server Integration for C•CURE 9000

Powerful infrastructure monitoring

Paessler PRTG Network Monitor enables you to monitor your infrastructure (servers, network components, overall system health) using several protocols such as SNMP, ICMP, WMI, OPC, etc. The PRTG Server integration from Encode Labs acts as an endpoint to receive HTTP Notifications coming from the PRTG Server. This combination provides you with critical security infrastructure monitoring directly inside the C•CURE9000 event management system.



Ensure continuity

Leverages the existing C•CURE9000 security and event monitoring capabilities and enriches it further to manage possible issues from within the complete security infrastructure. Such as network segments that might be down, server components that might be at risk of malfunctioning, power issues, etc.

Simplified view

With the integration deployed, you have a simplified view on the infrastructure health through your C•CURE9000 installation. One client software for the end user.

Some sample use cases

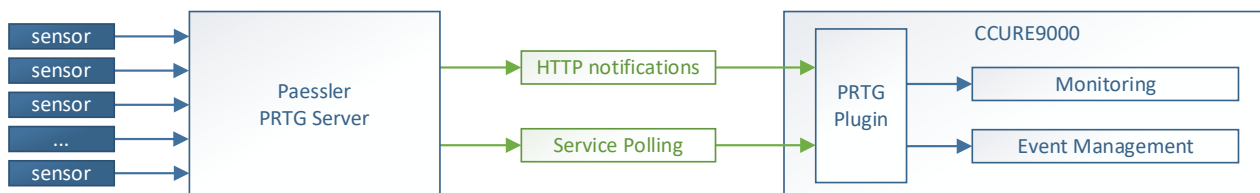
- Monitor health of critical security servers: monitor running services, network availability, component health, etc.
- Ensure you don't run out of disk space on any security server, logging or backup servers, and keep an eye on SQL Database sizes
- Provide key metrics such as accumulated up/down-time, last message, status.
- Manage certificate validity across devices by receiving warnings before expiration, avoiding downtime.

Name	Description	Accumulated Up-Time	Enabled	Paessler Sensor Status
Active Processes (SNMP Custom)	NAS1	100.0000% [167 d]	<input checked="" type="checkbox"/>	Up
SSL Certificate Sensor (Port 443) (SSL Certificate)	NAS1	100.0000% [167 d]	<input checked="" type="checkbox"/>	Warning
Physical Disk: Disk 1 (SNMP Synology Physical Disk)	NAS1	100.0000% [167 d]	<input checked="" type="checkbox"/>	Up
SSL Security Check (Port 443) (SSL Security Check)	NAS1	100.0000% [167 d]	<input checked="" type="checkbox"/>	Up
Physical Disk: Disk 2 (SNMP Synology Physical Disk)	NAS1	100.0000% [167 d]	<input checked="" type="checkbox"/>	Up
Memory: Physical memory (SNMP Memory)	NAS1	100.0000% [167 d]	<input checked="" type="checkbox"/>	Up
Synology System Health (SNMP Synology System Health)	NAS1	100.0000% [167 d]	<input checked="" type="checkbox"/>	Up
Logical Disk: Volume 1 (SNMP Synology Logical Disk)	NAS1	100.0000% [167 d]	<input checked="" type="checkbox"/>	Up
(003) eth0 Traffic (SNMP Traffic)	NAS1	100.0000% [167 d]	<input checked="" type="checkbox"/>	Up
Ping (Ping)	Helix Server	100.0000% [237 d]	<input checked="" type="checkbox"/>	Up
Intel[R] Ethernet Connection [7] I219-LM (Windows Network Card)	Probe Device	100.0000% [237 d]	<input checked="" type="checkbox"/>	Up

Key Features

- Leverage the powerful monitoring capabilities from the PRTG Server
- Provide key metrics for sensors
- Freely configure notification settings and trigger conditions on the PRTG Server
- Easy synchronization: automatically creates received sensor objects inside the C•CURE
- WatchDog functionality to monitor inter-server comms between C•CURE and PRTG Server
- Implement PRTG sensors in C•CURE Maps and follow their status updates
- Generate triggers in the C•CURE on sensor status changes

Diagram



Supported OS

- Windows Server 2019 Standard & Enterprise (64-bit)
- Windows Server 2016 Standard & Enterprise (64-bit)
- Windows Server 2012 R2 SP1 or later (64-bit)
- Windows 10 Professional & Enterprise (64-bit)

Ordering information

Model Number	Description
CC9-SNMP-SM	CCURE 9000 SNMP Monitoring adapter for a Small C-CURE 9000 system (series L, M, N)
CC9-SNMP-MED	CCURE 9000 SNMP Monitoring adapter for a Medium C-CURE 9000 system (series P, Q, R and for MAS 1, 2, 3)
CC9-SNMP-LG	CCURE 9000 SNMP Monitoring adapter for a Large C-CURE 9000 system (series R+,S, S+,T and for MAS 4, 5, 6)
CC9-SNMP-S	CCURE 9000 SNMP Monitoring adapter SSA (mandatory)

*This solution does NOT include any Paessler licenses. You can use the free version of Paessler PRTG Network Monitor for monitoring up to 100 sensors, or purchase a license from Paessler if more sensors are required. Refer to the Paessler website for more information.

Download

For more information on this module please follow this link <https://www.encode labs.be/>

The Software Package is available from our download page, the installation package contains all software and documentation: <https://www.encode labs.be/support/software-download-page/>